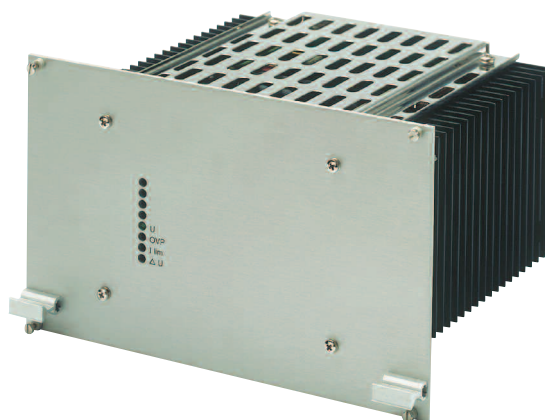


S600 Series

200-350 WATTS AC/DC-DC/DC-BATTERY CHARGERS SINGLE OUTPUT

FEATURES

- DC input 10 - 380 V
- AC input 1 or 3-phase, 47 - 400 Hz
- DC output 5-290V
- Continuous short circuit protection
- Overvoltage protection with auto restart
- Industrial grade components
- Compact and robust design

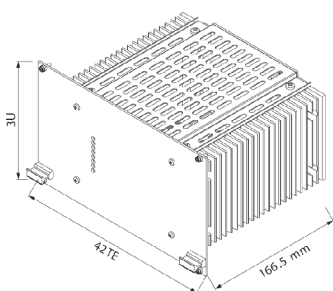
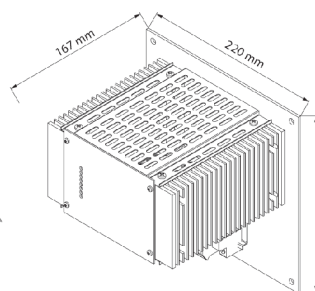


DC/DC CONVERTERS

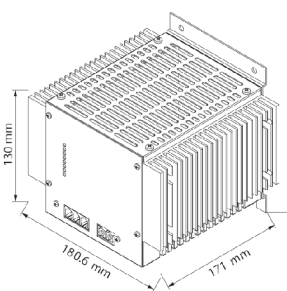
200 W		300 W		350 W							
				INPUT VDC					OUTPUT VDC		
10-16 VDC	OUTPUT AMPS	18-36 VDC	OUTPUT AMPS	36-75 VDC	45-90 VDC	80-160 VDC	160-320 VDC	320-380 1) VDC	OUTPUT AMPS	ADJ.	RANGE
S 600	30	S 620	50	S 630	S 640	S 650	S 670	S 680 Z	50	5	4.5 - 5.5
S 601	20	S 621	30	S 631	S 641	S 651	S 671	S 681 Z	32	9	8 - 10
S 602	15	S 622	24	S 632	S 642	S 652	S 672	S 682 Z	26	12	11 - 13
S 603	12	S 623	20	S 633	S 643	S 653	S 673	S 683 Z	22	15	14 - 16
S 604	8	S 624	12	S 634	S 644	S 654	S 674	S 684 Z	14	24	23 - 26
S 605	7	S 625	10	S 635	S 645	S 655	S 675	S 685 Z	12	28	26 - 30
S 609	4.4	S 629	6	S 639	S 649	S 659	S 679	S 689 Z	6.5	48	45 - 55
S 606	3.6	S 626	5	S 636	S 646	S 656	S 676	S 686 Z	5.2	60	58 - 68
S 607	1.8	S 627	2.5	S 637	S 647	S 657	S 677	S 687 Z	3	110	100 - 130
S 608	0.9	S 628	1.25	S 638	S 648	S 658	S 678	S 688 Z	1.5	220	200 - 250

AC/DC POWER SUPPLIES

350 W						
INPUT VAC, 1-PHASE			INPUT VAC, 3-PHASE	OUTPUT AMPS	OUTPUT VDC	
115 ± 20%	230 + 15% - 20%	115 ± 20% 230 + 15% - 20%	3X200 + 15% - 20%		ADJ.	RANGE
S 660	S 680	S 690	S 660 V	50	5	4.5 - 5.5
S 661	S 681	S 691	S 661 V	32	9	8 - 10
S 662	S 682	S 692	S 662 V	26	12	11 - 13
S 663	S 683	S 693	S 663 V	22	15	14 - 16
S 664	S 684	S 694	S 664 V	14	24	23 - 26
S 665	S 685	S 695	S 665 V	12	28	26 - 30
S 669	S 689	S 699	S 669 V	6.5	48	45 - 55
S 666	S 686	S 696	S 666 V	5.2	60	58 - 68
S 667	S 687	S 697	S 667 V	3	110	100 - 130
S 668	S 688	S 698	S 668 V	1.5	220	200 - 250

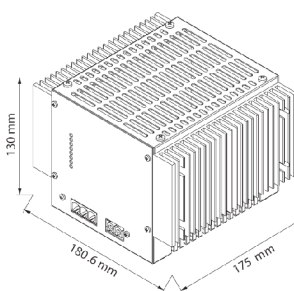
Eurocassette / approx. 2.6 kg
(pluggable module for 19" sub-rack)

Wall mount / approx. 3.6 kg



NEW

Chassis mount / approx. 3.1 kg



NEW

DIN rail mount / approx. 3.0 kg